

How to upload a file ... in five easy steps:

At the bottom of the referral form there is a button for uploading files-

The screenshot shows a web browser window titled "CT - Create Referral - Mozilla Firefox". The address bar displays "https://collegiumtelemedicus.org/ct/php/create_referral.php". The page header includes the "Collegium Telemedicus" logo and "[Network logo]". The main heading is "Create a new referral (screen 2 of 3) - General referral". Below this, a prompt says "Please provide as much information as you can." The form consists of eight numbered text input fields:

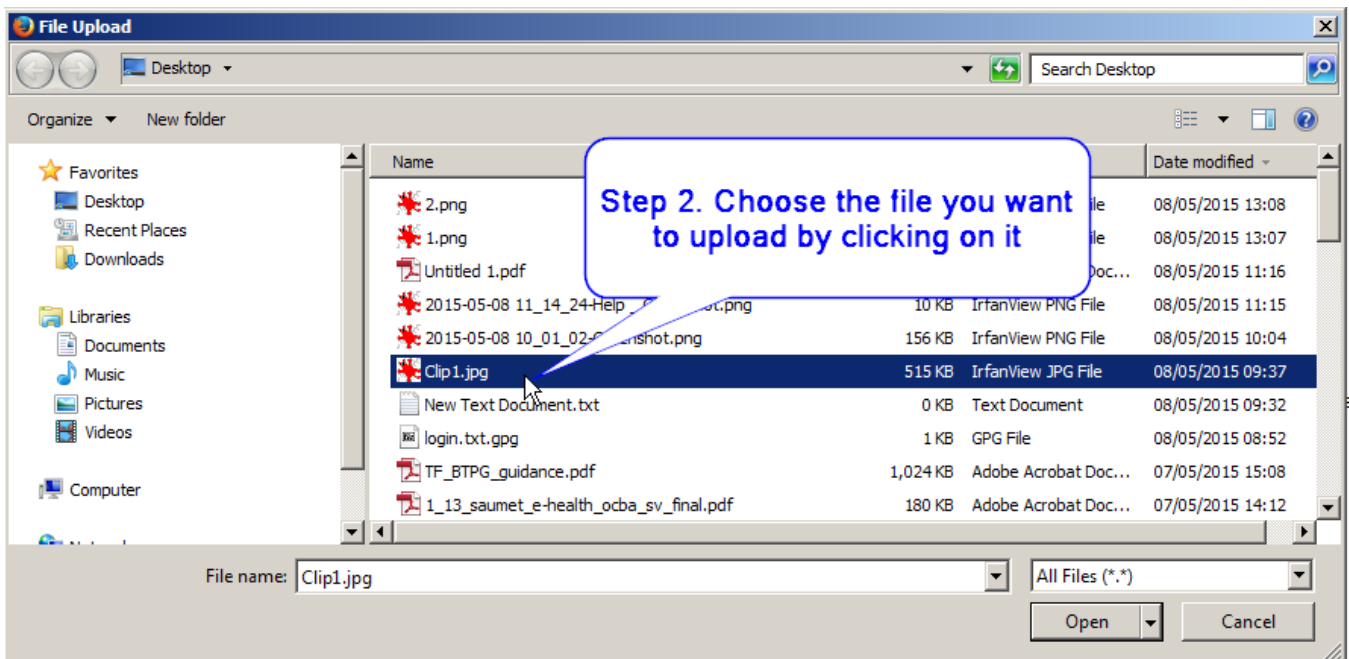
1. PRESENTING COMPLAINT:
2. HISTORY OF PRESENTING COMPLAINT:
3. PAST MEDICAL HISTORY: (with example text: "e.g. family history, previous medical/surgical history, social history")
4. PHYSICAL EXAMINATION: (with example text: "e.g. vital signs, central nervous system, cardiovascular system, respiratory system")
5. INVESTIGATIONS:
6. WORKING DIAGNOSIS:
7. CURRENT MANAGEMENT / TREATMENT: (with example text: "(if any)")
8. OTHER: (with example text: "any other remarks/details")

At the bottom of the form, there is an "Attachments:" section with a button labeled "Attach file(s)". A blue callout box with a white background and a blue border points to this button, containing the text: "Click here to attach one or more files to your referral". Below the button, there is a note: "If you have files to attach (e.g. images), click the button". At the very bottom of the form, there are three buttons: "Back", "Next", and "Cancel".

Step 1.



Step 2.



Step 3.

CT - Upload a file - Mozilla Firefox
https://collegiumtelemedicus.org/ct/php/upload_form_about_case.php?rec_no=8728pt=

Collegium Telemedicus

Upload a file relating to

(n.b. no files yet uploaded for this case)

Select the file to upload by pressing the **Browse** button. Then transmit it to the server by pressing the **Upload** button:

File name: Name of file (i.e. image) to upload. Note: the maximum size is 200 MB

Contents: Brief description of contents, e.g. 'Chest X-ray, AP'

or Press **Upload** to send your file to the server; or press **Finished** if there are no more files to upload

Step 3. Type a short description of what's in the file, so that the Specialist doesn't have to guess

Notice that the name of the file you selected now appears here

Step 4.

CT - Upload a file - Mozilla Firefox
https://collegiumtelemedicus.org/ct/php/upload_form_about_case.php?rec_no=8738pt=

Collegium Telemedicus

Upload a file relating to

(n.b. no files yet uploaded for this case)

Select the file to upload by pressing the **Browse** button. Then transmit it to the server by pressing the **Upload** button:

File name: Name of file (i.e. image) to upload. Note: the maximum size is 200 MB


Contents: Brief description of contents, e.g. 'Chest X-ray, AP'

or Press **Upload** to send your file to the server; or press **Finished** if there are no more files to upload

Step 4. Click the Upload button and wait for the file to be sent to the server. If the Internet connection is slow, this may take several seconds

Step 5.

CT - Upload a file - Mozilla Firefox
https://collegiumtelemedicus.org/ct/php/upload_form_about_case.php?rec_no=872&pt=



Upload a file relating to

The following file has already been uploaded for this case:

1 Attached file(s)

File	File name	Size (kB)	Legend
1	Clip1.jpg	514	Wide view of skin lesion

Select the file to upload by pressing the **Browse** button. Then transmit it to the server by pressing the **Upload** button:

File name: No file selected. Name of file (i.e. image) to upload. Note: the maximum size is 200 MB

Contents: Brief description of contents, e.g. 'Chest X-ray, AP'

or Press **Upload** to send your file to the server; or press **Finished** if there are no more files to upload

Notice that the details of the file you have uploaded are now displayed

Step 5. Click the Finished button. If you have another file to send, then click Upload instead